


WFS Digital Solutions

2020



AGENDA



- Our **solutions & products**
 - The **key markets** we help
 - The **way we work**
-

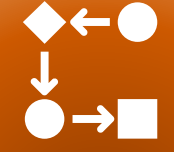
OUR SOLUTIONS & PRODUCTS



Portfolio overview



eSignature



eDocument
Workflow



eDocument
Management
System



Forklift
Fleet Management
Platform



Real time
eKanban
management



Automatic
Procurement
Management



Virtual assistant



Real-time business
monitoring



Strategic
Dashboards

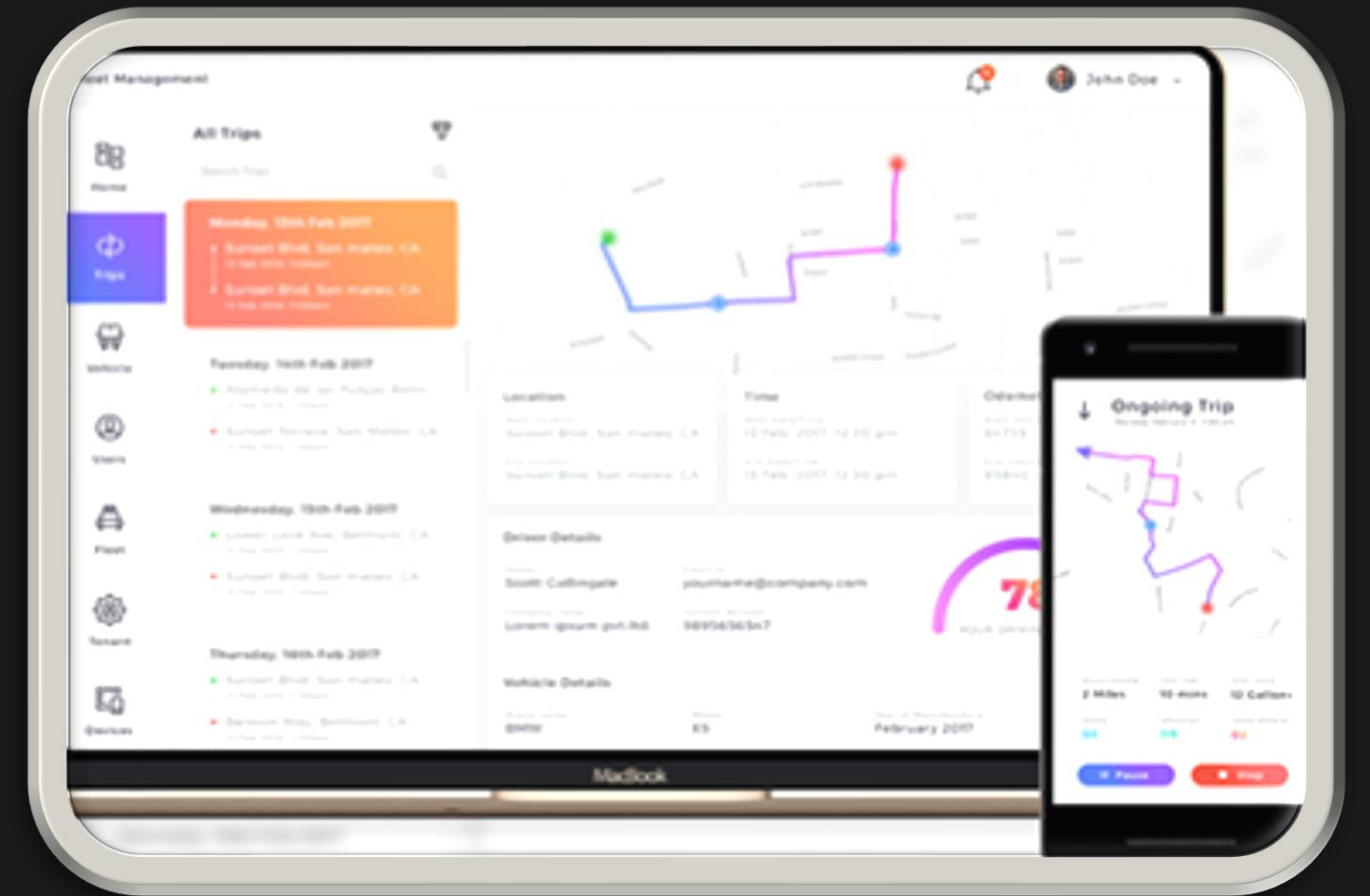


Real-time inventory
management



Real-time utilities
monitoring

Forklift Fleet Management Platform



Real-time tracking of forklifts or other vehicles, such as AVGs, clamps and fork trucks



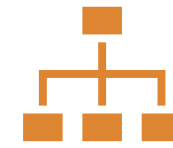
Comprehensive **order management system**, complemented by a sophisticated **route optimization algorithm**



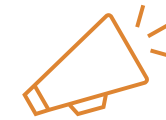
Full data analytics features embedded into the platform helps your logistics and production managers achieve **greater efficiency and profitability**



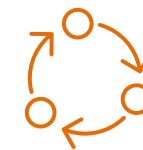
Real-time eKanban management platform



Enables **real time coordination and supervision** over projects, activities and priorities



Enables **real-time communication of capacity and full transparency of work**



Gain full real-time visibility of all processes - management can achieve greater control by being notified immediately if the flow of activities is not following the momentum



Improve workload efficiency - real time visibility over available personnel who do not have assigned activity, limit work in progress



Real-time alerts or notifications - in case an employee is stuck or needs help

Automatic Procurement Management



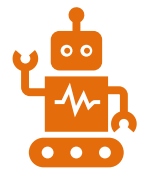
Automatically send pre-orders to suppliers based on established stocks levels - synchronize stocks levels based on purchases and create automatic replenishment rules to avoid stockouts



Forecast automatically based on sales orders, delivery orders, contracts, or material



Real-time analytics on delivery delays, negotiated discounts on prices, quantities purchased



Virtual assistant



Communicates clearly and provides answers to multiple clients simultaneously about products or services 24/7



Offers a fully personalized experience to each client



Eliminates queue and waiting times



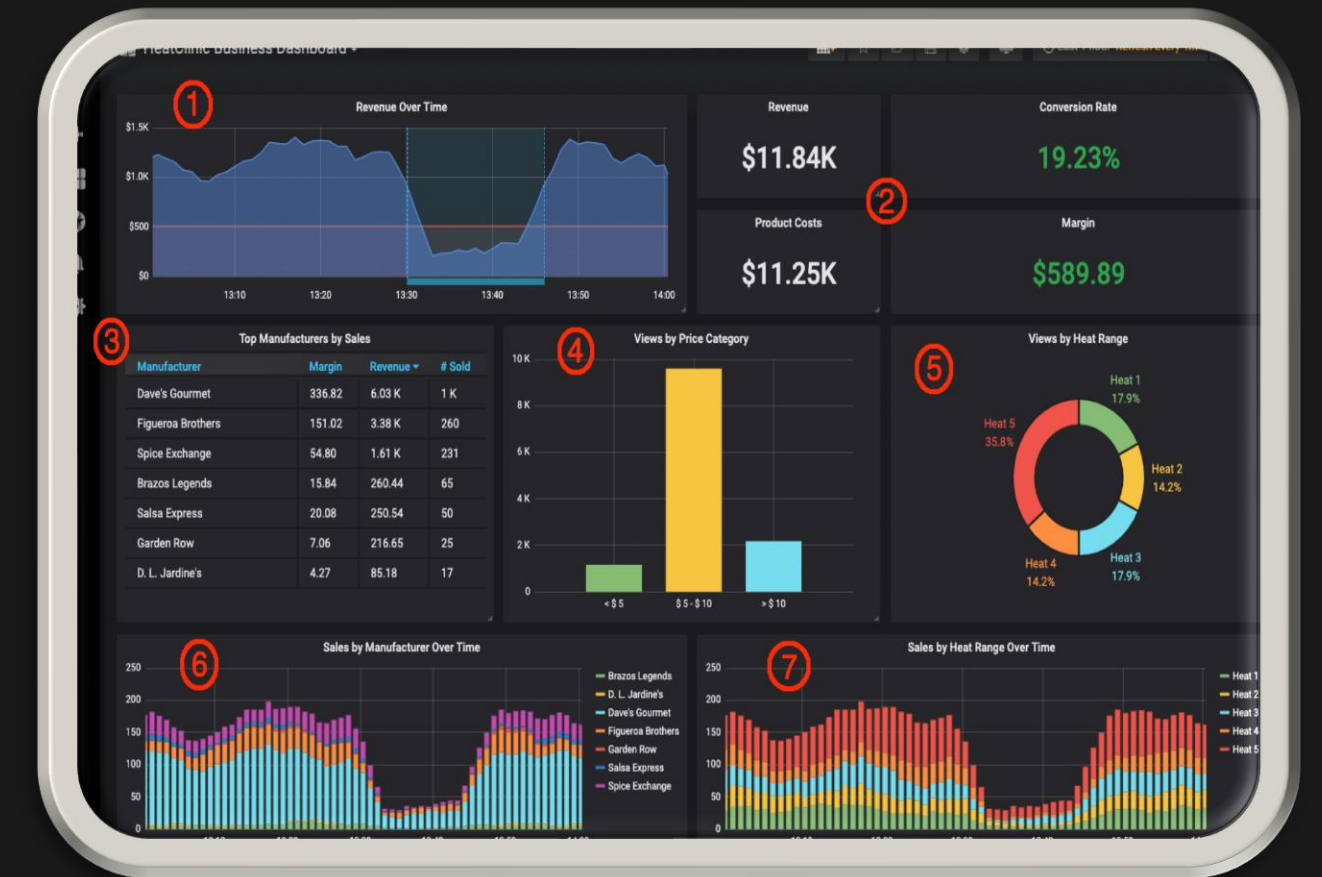
Customer support team can focus only on difficult and sensible requests



Can transfer the conversation to a human consultant when needed or schedules meetings in case human consultants are not available



Real-time business monitoring



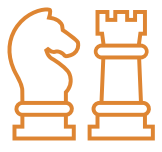
Real-time monitoring, control and analysis at department level which proactively helps in managing and preventing risks



All key metrics and KPIs at department level in one place



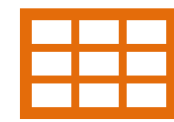
Real-time alerts on thresholds breach enabling preemptive actions



Strategic Dashboards



Up to date insight into the organization's performance as it relates to the strategic plan



A unified view of data that is enriched and integrated from different sources



Reflects progress toward goals and spotlight specific initiatives that are in play to reach those goals



Enables to zoom in on the specific activities and disciplines within a department to understand the variances against target



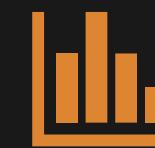
Real-time **inventory** **management**



Automated inventory monitoring across multiple locations and warehouses



Automated integration with the warehouse and distribution management systems



Real-time analytics on inventory evolution trends



Real-time utilities monitoring



Real-time consumption monitoring: electricity, natural gases & water for multiple locations and users



Accurate measurement of current cost and prediction for invoicing at end of period



Full historical data for easily forecasting trends (e.g.: seasonal trends, production based, activity based, etc.)



eDocument Management System



Makes **access** to **critical information** **quick** and **simple** from any **device** or **location**



Provides a **single point** of **access**



Enables **collaboration** and **resource sharing** for teams



Documents can be **accessed** based on **different rules & authorizations**

eSignature



Sign **contracts** with your customers online



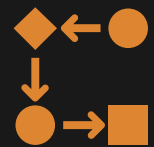
Enables **contract conclusion** without media disruption or additional hardware



Highest security **standard & legal compliance**



eDocument Workflow



Custom processing & approval workflow for any type of document



Real-time visibility & access to any document



Real-time alerts for the user who needs to step into the workflow

THE KEY MARKETS WE HELP



THE KEY MARKETS WE HELP





**THE WAY
WE WORK**

THE WAY WE WORK



EACH BUSINESS IS UNIQUE

Each business or industry has nuances that are peculiar and distinctive.



UNDERSTAND YOUR NEEDS

Together with your team we understand exactly your needs, requirements and pain points.



TAYLOR YOUR PRODUCT

Using cutting-edge technology and way of working we design, produce and launch a tailored digital product shaped exactly on your needs.

A hand in a blue suit jacket is pointing at a digital chart. The chart features a bar graph with blue bars and a white line graph with a white arrow pointing upwards. The background is a blurred image of a person in a blue suit.

LET'S BUILD TOGETHER
the **tailored digital solutions** you need!

CONTACT:

bogdan.hossu@wfs.eu

paul.pitu@wfs.eu

Thank you!

CONTACT:

bogdan.hossu@wsf.eu

paul.pitu@wsf.eu